

TEESTA

height 5'8.5 · bust 30.5" · cup B · waist 24" · hips 35.5" · dress 36 EU/6 US/8 UK
shoes size 40 EU/9 US/6.5 UK · hair brown · eyes brown



TEESTA

height 5'8.5 · bust 30.5" · cup B · waist 24" · hips 35.5" · dress 36 EU/6 US/8 UK
shoes size 40 EU/9 US/6.5 UK · hair brown · eyes brown

MGM
MODELS

MGM
MODELS

TEESTA

height 5'8.5 · bust 30.5" · cup B · waist 24" · hips 35.5" · dress 36 EU/6 US/8 UK
shoes size 40 EU/9 US/6.5 UK · hair brown · eyes brown



TEESTA

height 5'8.5 · bust 30.5" · cup B · waist 24" · hips 35.5" · dress 36 EU/6 US/8 UK
shoes size 40 EU/9 US/6.5 UK · hair brown · eyes brown



TEESTA

height 5'8.5 · bust 30.5" · cup B · waist 24" · hips 35.5" · dress 36 EU/6 US/8 UK
shoes size 40 EU/9 US/6.5 UK · hair brown · eyes brown



TITLE PAGE
TOP AND
SKIRT: ZARA
EARRINGS:
STYLIST'S OWN

THIS PAGE
KNIT TOP: H&M
PANTS: ZARA

TEESTA

height 5'8.5 · bust 30.5" · cup B · waist 24" · hips 35.5" · dress 36 EU/6 US/8 UK
shoes size 40 EU/9 US/6.5 UK · hair brown · eyes brown



TEESTA

height 5'8.5 · bust 30.5" · cup B · waist 24" · hips 35.5" · dress 36 EU/6 US/8 UK
shoes size 40 EU/9 US/6.5 UK · hair brown · eyes brown



TEESTA

height 5'8.5 · bust 30.5" · cup B · waist 24" · hips 35.5" · dress 36 EU/6 US/8 UK
shoes size 40 EU/9 US/6.5 UK · hair brown · eyes brown



TEESTA

height 5'8.5 · bust 30.5" · cup B · waist 24" · hips 35.5" · dress 36 EU/6 US/8 UK
shoes size 40 EU/9 US/6.5 UK · hair brown · eyes brown



TEESTA

height 5'8.5 · bust 30.5" · cup B · waist 24" · hips 35.5" · dress 36 EU/6 US/8 UK
shoes size 40 EU/9 US/6.5 UK · hair brown · eyes brown



TEESTA

height 5'8.5 · bust 30.5" · cup B · waist 24" · hips 35.5" · dress 36 EU/6 US/8 UK
shoes size 40 EU/9 US/6.5 UK · hair brown · eyes brown



MGM
MODELS

MGM
MODELS

TEESTA

height 5'8.5 · bust 30.5" · cup B · waist 24" · hips 35.5" · dress 36 EU/6 US/8 UK
shoes size 40 EU/9 US/6.5 UK · hair brown · eyes brown



TEESTA

height 5'8.5 · bust 30.5" · cup B · waist 24" · hips 35.5" · dress 36 EU/6 US/8 UK
shoes size 40 EU/9 US/6.5 UK · hair brown · eyes brown



TOP: STYLISTS OWN

VULKAN

TEESTA

height 5'8.5 · bust 30.5" · cup B · waist 24" · hips 35.5" · dress 36 EU/6 US/8 UK
shoes size 40 EU/9 US/6.5 UK · hair brown · eyes brown



TEESTA

height 5'8.5 · bust 30.5" · cup B · waist 24" · hips 35.5" · dress 36 EU/6 US/8 UK
shoes size 40 EU/9 US/6.5 UK · hair brown · eyes brown



CHROME HEARTS

私だけのラグジュアリーな時間

リラックスしたいときこそ、上質で洗練されたワードローブで過ごしたい。
クロムハーツから新しく登場したラグジュアリーなアイコンジグモテープをまとうと
心癒い、時間と空間がさらなる心地へとアップデートされるはず。
photo SHUNYA ARAI / y&f styling MIYUKI UESUGI / sense of humour hair KENICHI / sense of humour
makeup YUMI ENDO / night piece model TEESTA / image realization ATSUKO KOBAYASHI

TEESTA

height 5'8.5 · bust 30.5" · cup B · waist 24" · hips 35.5" · dress 36 EU/6 US/8 UK
shoes size 40 EU/9 US/6.5 UK · hair brown · eyes brown



TEESTA

height 5'8.5 · bust 30.5" · cup B · waist 24" · hips 35.5" · dress 36 EU/6 US/8 UK
shoes size 40 EU/9 US/6.5 UK · hair brown · eyes brown



TEESTA

height 5'8.5 · bust 30.5" · cup B · waist 24" · hips 35.5" · dress 36 EU/6 US/8 UK
shoes size 40 EU/9 US/6.5 UK · hair brown · eyes brown



MGM
MODELS

MGM
MODELS

TEESTA

height 5'8.5 · bust 30.5" · cup B · waist 24" · hips 35.5" · dress 36 EU/6 US/8 UK
shoes size 40 EU/9 US/6.5 UK · hair brown · eyes brown



TEESTA

height 5'8.5 · bust 30.5" · cup B · waist 24" · hips 35.5" · dress 36 EU/6 US/8 UK
shoes size 40 EU/9 US/6.5 UK · hair brown · eyes brown



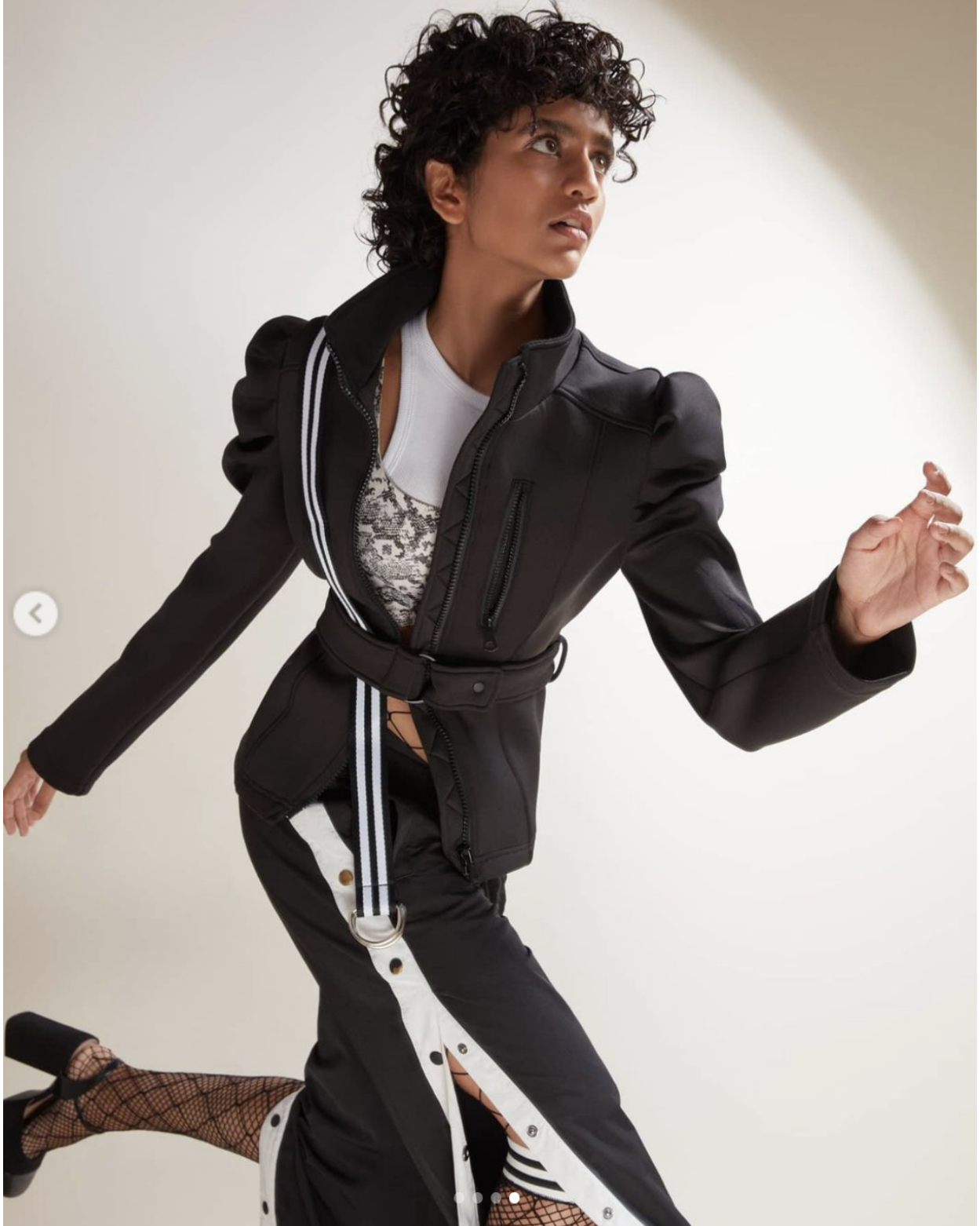
TEESTA

height 5'8.5 · bust 30.5" · cup B · waist 24" · hips 35.5" · dress 36 EU/6 US/8 UK
shoes size 40 EU/9 US/6.5 UK · hair brown · eyes brown



TEESTA

height 5'8.5 · bust 30.5" · cup B · waist 24" · hips 35.5" · dress 36 EU/6 US/8 UK
shoes size 40 EU/9 US/6.5 UK · hair brown · eyes brown



TEESTA

height 5'8.5 · bust 30.5" · cup B · waist 24" · hips 35.5" · dress 36 EU/6 US/8 UK
shoes size 40 EU/9 US/6.5 UK · hair brown · eyes brown



TEESTA

height 5'8.5 · bust 30.5" · cup B · waist 24" · hips 35.5" · dress 36 EU/6 US/8 UK
shoes size 40 EU/9 US/6.5 UK · hair brown · eyes brown

MGM
MODELS

MGM
MODELS

TEESTA

height 5'8.5 · bust 30.5" · cup B · waist 24" · hips 35.5" · dress 36 EU/6 US/8 UK
shoes size 40 EU/9 US/6.5 UK · hair brown · eyes brown



TEESTA

height 5'8.5 · bust 30.5" · cup B · waist 24" · hips 35.5" · dress 36 EU/6 US/8 UK
shoes size 40 EU/9 US/6.5 UK · hair brown · eyes brown



TEESTA

height 5'8.5 · bust 30.5" · cup B · waist 24" · hips 35.5" · dress 36 EU/6 US/8 UK
shoes size 40 EU/9 US/6.5 UK · hair brown · eyes brown

T
E
E
S
T
A

D
A
L
V
I

The Mumbai-bred light-eyed model with vivacious locks is currently juggling modelling alongside completing her second year in college. She was spotted at a festival early last year and has already added some noteworthy projects to her name that include Global Desi, Neeta Lulla, Ensemble, Snapdeal and couture label, Jade.

What's your idea of beauty?

It's self-acceptance, it's alright if only one person thinks you are beautiful and that person is yourself.

Describe your personal style.

Homeless chic.

If you could be a part of a super model clique, who would it include?

I wouldn't pick Kendall or Gigi. There are several underrated models who are very cool; I'd love to be gal pals with Alanna Arrington, Elsa Hosk and Jasmine Tookes.

What's the hardest part about modelling that nobody warns you about?

The pressure of rejection; you need to learn to deal with it.

You'd have finally arrived when...

I work on a campaign for H&M. I recently saw a video banner that features Pooja Mor who seems like such an unlikely face but is immensely inspiring. If she can do it, hopefully so can I. 🙌



Embellished jumper, **Manish Arora**; neoprene trousers, **Huemn**; Gold plated earrings, **Misho**; embroidered heels, **Jimmy Choo**

TEESTA

height 5'8.5 · bust 30.5" · cup B · waist 24" · hips 35.5" · dress 36 EU/6 US/8 UK
shoes size 40 EU/9 US/6.5 UK · hair brown · eyes brown

